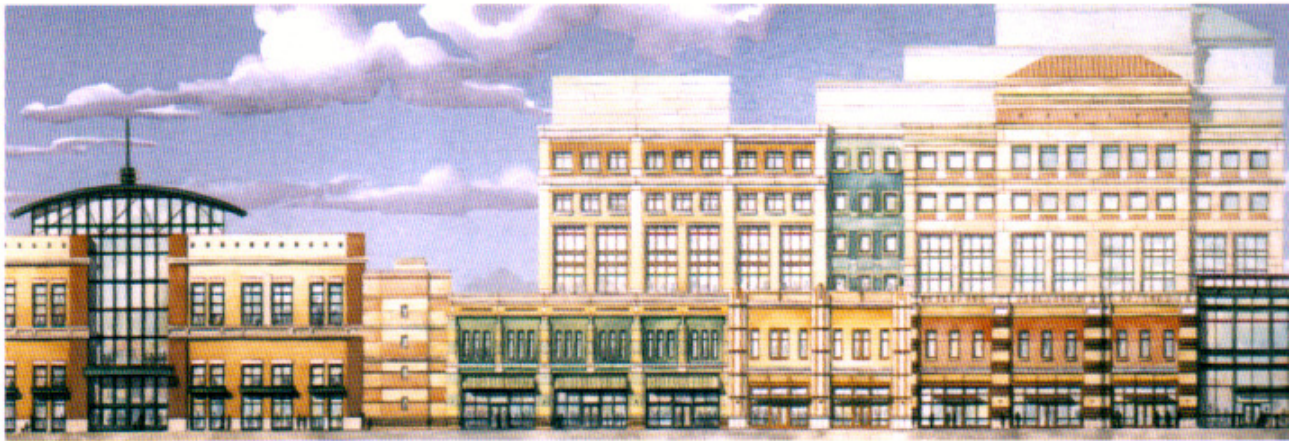


Senergy[®]

COLOR SELECTION GUIDE





COLOR

3025 Paprika	3029 Creme Brule	3035 Strawberry	3037 Mariposa	3053 Tawny	3074 Coriander	528 Sun Glow
3026 Clay Pot	3031 Ground Mace	3030 Solitude	3028 Vintage	3038 Scarborough	3066 Bambi	3067 Egg Cream
545 Dusty Peach	3027 Mannequin	3036 Daiquiri	3033 Peacherine	3039 Coral	3049 Artisan	3044 Ramie
3043 Pueblo	3032 Melon	3042 Nirvana	3048 Lotus	3054 Sonata	3057 Luna	3051 Windsong
543 Slate Rose	3059 Mosque	547 Blush	3041 Firenze	600 Silverado	3047 Tortilla	3080 Ecu
614 Clay	3073 Hickory	612 Seashell	549 Pink Ash	3103 Sandstorm	3063 Frappe	3062 Angora
620 Ash Brown	618 Hazelnut	3052 Cardamon	3064 Rawhide	3060 Cafe au Lait	3061 Dune	3055 Shearling
3069 Sepia	3070 Brunet	3071 Java	3072 Bulgur	433 Aztec Gold	3065 Peanut	361 Champagne

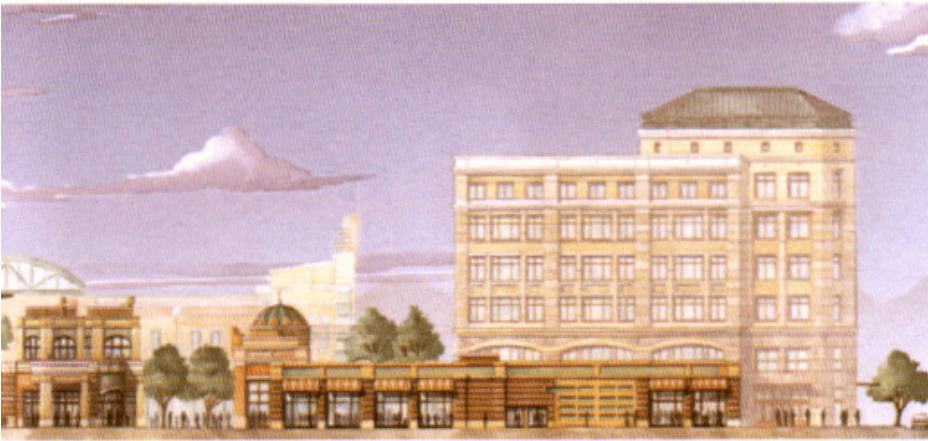
The purpose of this chart is to provide representation of Senergy's colors and textures. The color and texture representations should not be used for final selection. Actual color and texture selection should be made from a sample made by the applicator using the same tools, techniques and materials proposed for the actual project.



The Gateway - Salt Lake City

3086 Lion's Mane	3081 Empire	3076 Umber	3077 Ocha	3082 Cumin	3078 Gold Ochre	3079 Bay Leaf
3089 Gauze	3090 Honeysuckle	440 Custard	3085 Meringue	3097 Saddlesoap	3083 Flax	3088 Cat's Eye
3046 Finesse	3084 Egg Nog	3075 Parsnip	3034 Muslin	601 Dynasty	3091 Sprite	3087 Mint Aspic
354 Stark White	330 Ultra-White	3058 Nightingale	3096 Orchid	3092 New Frond	3095 Mint Tea	606 Glacier
3045 Edelweiss	3068 Birch	3050 Nougat	410 Snow	3094 Harrier	3099 Brume	869 London Fog
3056 Papyrus	342 Parchment	3100 Biscuit	425 Salt White	3101 Vibrato	752 Dawn Grey	751 Morning Mist
3040 Jute	431 Almond	427 Oatmeal	610 Porridge	3098 Crescent	3104 Walden	3102 Revere
3105 Sandman	3106 Concord	3107 Sage	3108 Badger	329 Putty Grey	875 Grey Cloud	877 Slate Grey

All standard colors (except for Charcoal Grey), have a light reflectance value (LRV) greater than 20%. The use of dark colors (LRV less than 20%) is not recommended with EIF Systems that incorporate expanded polystyrene (EPS). EPS has a sustained service temperature limitation of approximately 160°F (71°C). The use of dark colors in some climatic conditions could result in EPS temperatures that exceed this limit. Design Professionals can consult BASF Wall Systems' Technical Service to review the feasibility of colors selected for specific projects.



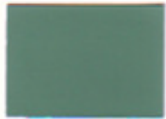
TEXTURE



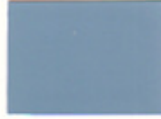
609 Greenbrier



605 Bluet



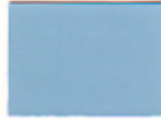
608 Glade



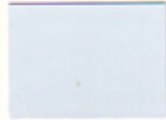
604 Truro Blue



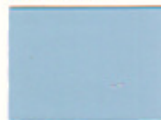
607 Gem



603 Atlantis



602 Crystal Blue



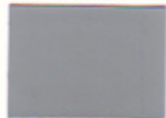
611 Robin Egg



755 Seamist



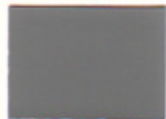
3093 Seattle Mist



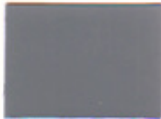
3109 Grey Ash



758 Thundermist



872 Whale Grey



757 Magnum



870 Storm Grey*



880 Charcoal*



Fine



Sahara



Texture



Belgian Lace



Classic



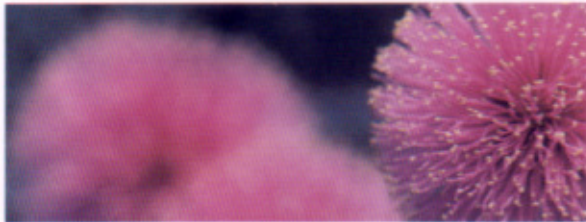
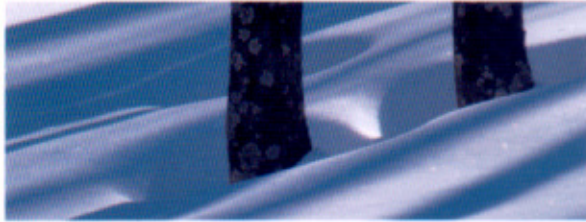
Coarse

* Not for use with EIFS. The use of dark colors (LRV less than 20%) is not recommended with EIFS that incorporate expanded polystyrene (EPS). EPS has a sustained service temperature limitation of approximately 160F (71°C).

Strive to create a sense of place...

choose color, texture and form with

sensitivity to the natural surroundings.





Build with confidence®

Disclaimer

This information and all further technical advice are based on BASF's present knowledge and experience. However, BASF assumes no liability for providing such information and advice including the extent to which such information and advice may relate to existing third party intellectual property rights, especially patent rights. In particular, BASF disclaims all CONDITIONS AND WARRANTIES, WHETHER EXPRESS OR IMPLIED, INCLUDING THE IMPLIED WARRANTIES OF FITNESS FOR A PARTICULAR PURPOSE OR MERCHANTABILITY. BASF SHALL NOT BE RESPONSIBLE FOR CONSEQUENTIAL, INDIRECT OR INCIDENTAL DAMAGES (INCLUDING LOSS OF PROFITS) OF ANY KIND. BASF reserves the right to make any changes according to technological progress or further developments. It is the customer's responsibility and obligation to carefully inspect and test any incoming goods. Performance of the product(s) described herein should be verified by testing and carried out only by qualified experts. It is the sole responsibility of the customer to carry out and arrange for any such testing. Reference to trade names used by other companies is neither a recommendation, nor an endorsement of any product and does not imply that similar products could not be used.

Senergy®

BASF Wall Systems | 3550 St. Johns Bluff Road, South | Jacksonville FL 32224-2614
1-800-221-9255 | www.senergy.cc